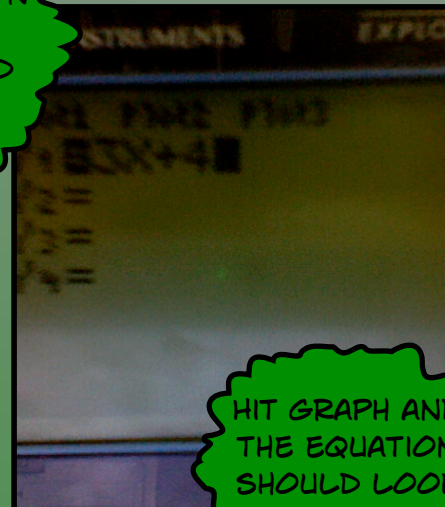


EAGLES

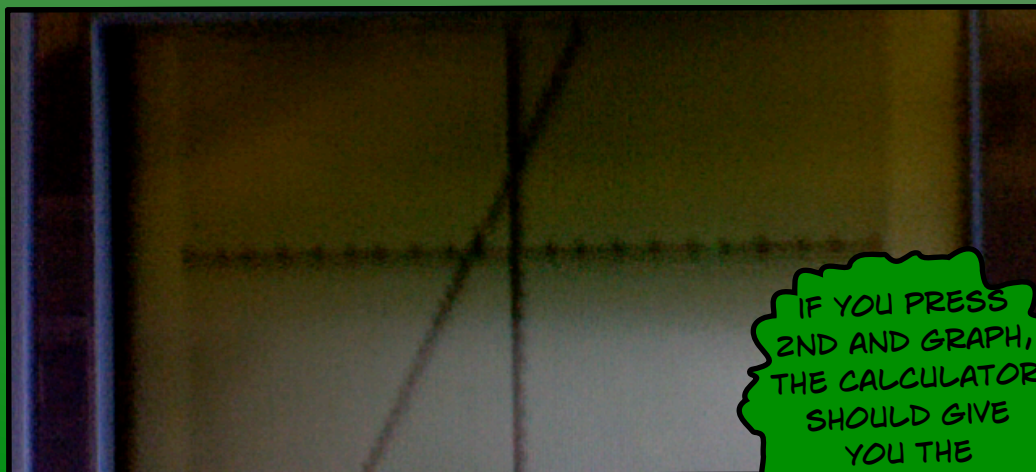
HOW TO GRAPH
 $3x+4$?



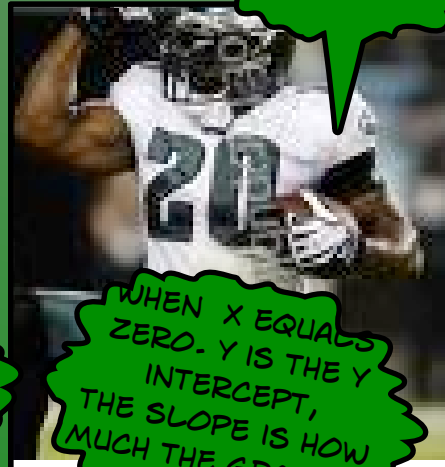
PUT THE EQUATION
IN YOUR
CALCULATOR AND
GRAPH IT.



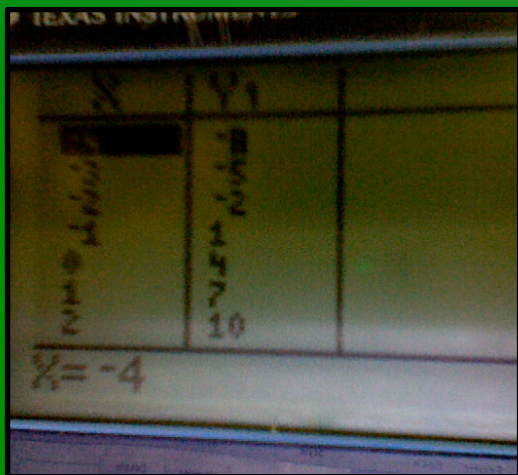
HIT GRAPH AND
THE EQUATION
SHOULD LOOK
LIKE THAT.



IF YOU PRESS
2ND AND GRAPH,
THE CALCULATOR
SHOULD GIVE
YOU THE
COORDINATE.



WHEN x EQUALS
ZERO, y IS THE y
INTERCEPT,
THE SLOPE IS HOW
MUCH THE GRAPH IS
GOING UP OR

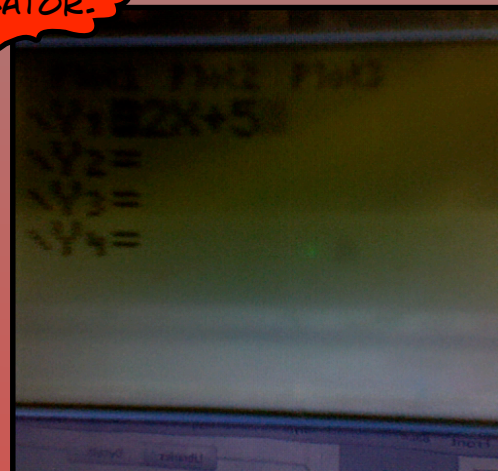


The y intercept
is 4
The slope is 3



$$Y=2X+5$$

LIKE EARLIER -
YOU CAN GRAPH
IT IN YOUR
CALCULATOR.



SLOPE- HOW MUCH A
LINEAR EQUATIONS
GOING UP OR DOWN
BY

DEFINITIONS

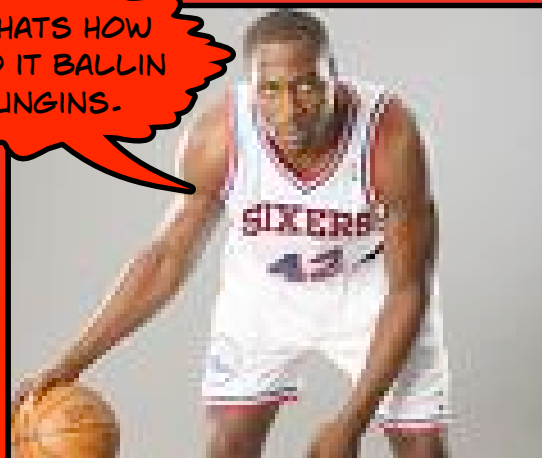
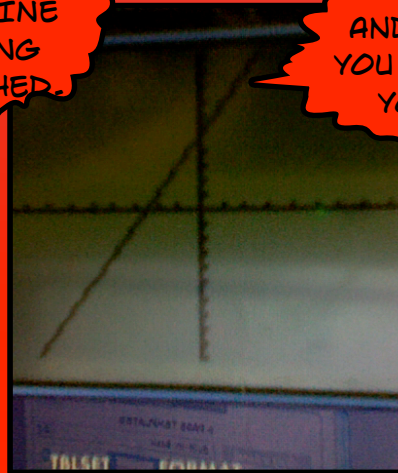
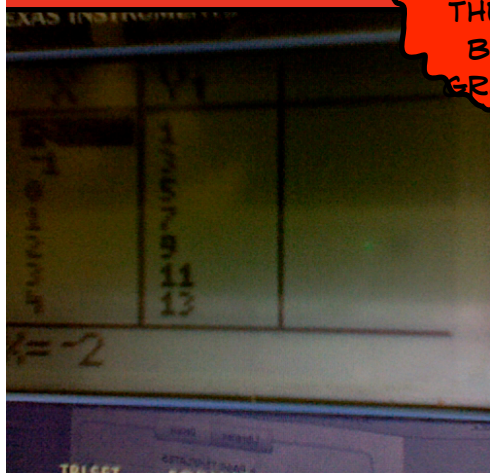
Y INTERCEPT- WHERE
THE LINEAR EQUATION
CROSSES THE Y AXIS.

THOSE
WHERE THE
TABLE FOR X
AND Y AND
THE LINE
BEING
GRAPHED.

SLOPE OF THE
LINE IS 2.

THE Y INTERCEPT OF
THE LINE IS 5.

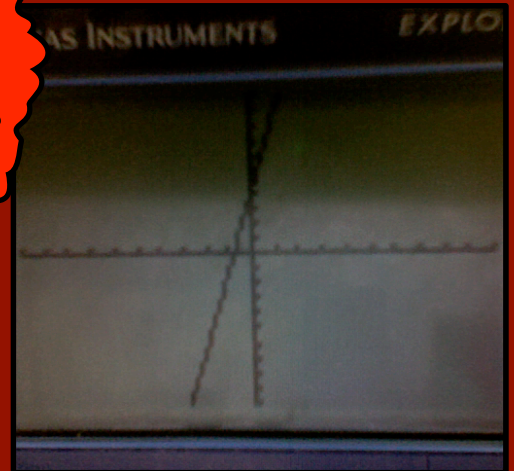
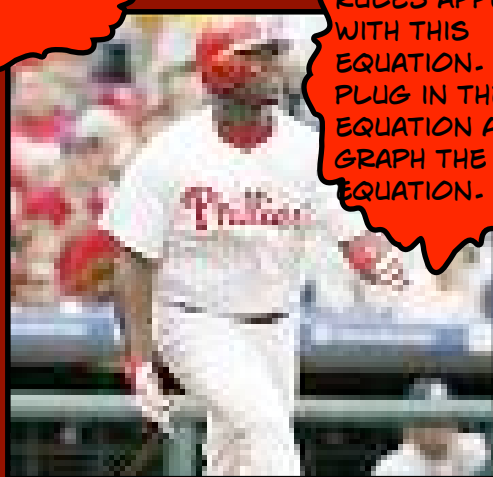
AND THATS HOW
YOU DO IT BALLIN
YOUNGINS.



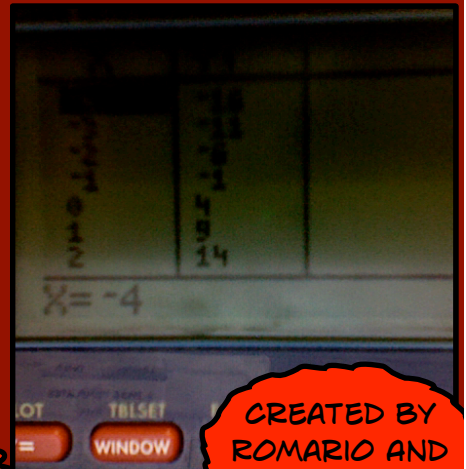


$$y=5x+4$$

THE SAME RULES APPLY WITH THIS EQUATION. PLUG IN THE EQUATION AND GRAPH THE EQUATION.



LINEAR EQUATIONS HOW TO SOLVE THEM DISE AND ROMARIO



THAT'S HOW YOU SOLVE NUMBER ONE!

CREATED BY ROMARIO AND DISE..

Y INTERCEPT- IS 4

SLOPE OF THE LINE- IS 5..



HOW TO FIND SLOPE AND Y INTERCEPT,

SLOPE

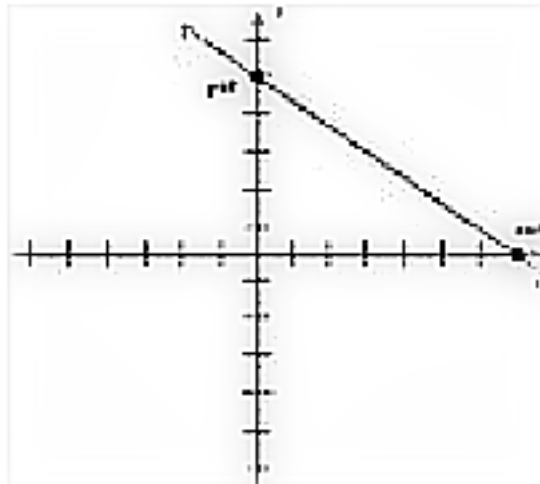
YOU CAN FIND THE SLOPE
BY USING THIS RULE
WHEN YOU USE YOUR
TABLE.

$$m = \frac{y_2 - y_1}{x_2 - x_1}$$

IF YOU DO THIS
CORRECTLY THEN YOU
SHOULD FIND THE
SLOPE..

Y INTERCEPT

IT IS BASICALLY Y
WHEN X EQUALS
ZERO



IF YOU LOOK AT THE
GRAPH CAREFULLY
YOU CAN SEE WHERE X
CROSS THE Y... THATS
THE Y INTERCEPT